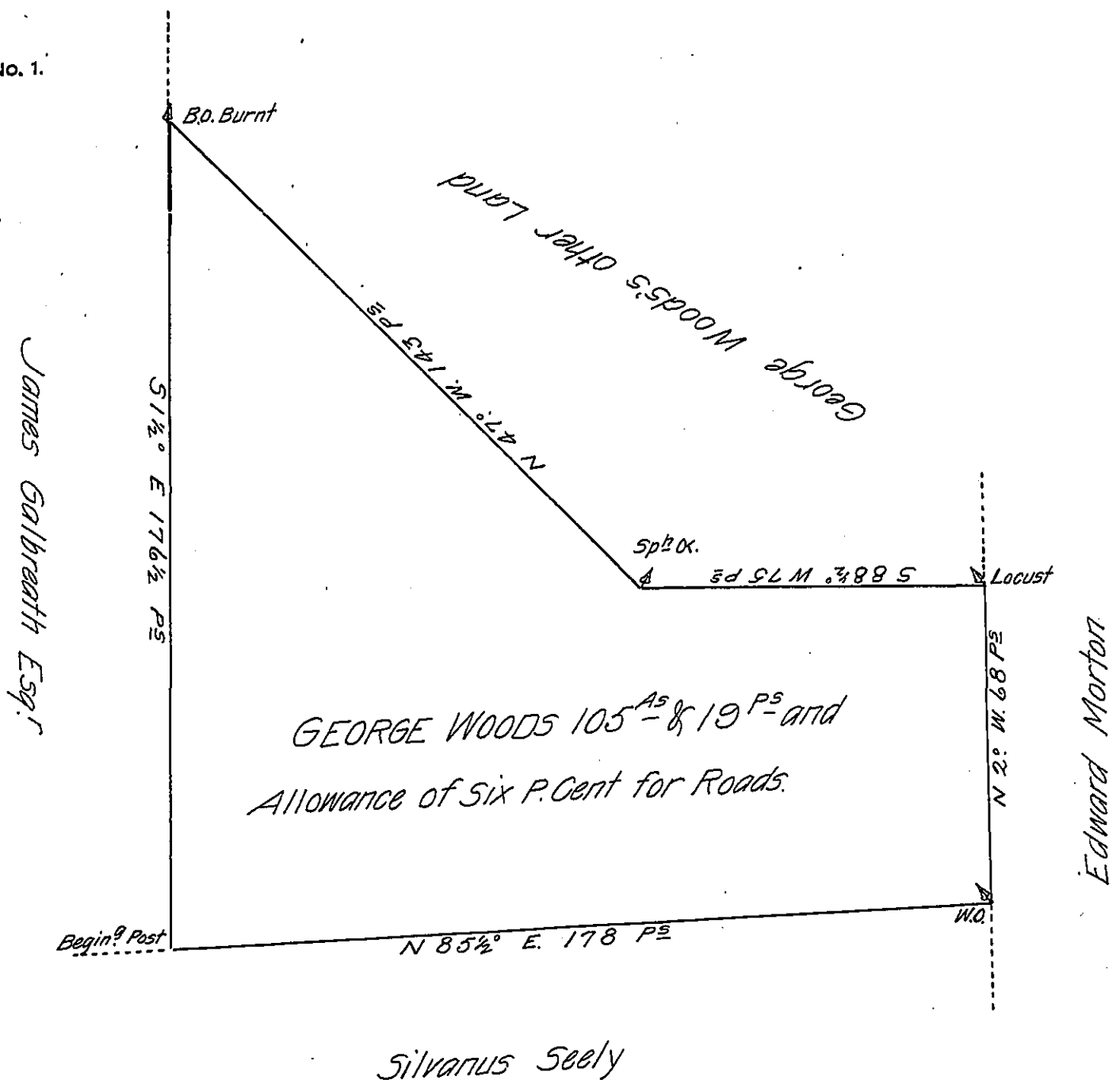


FORM NO. 1.



Silvanus Seely

A Draught of a Tract of Land Situate in East Pennsborough Township in Cumberland County Containing one Hundred and five Acres and nineteen Perches and the usual Allowance of Six P. Cent for Roads, Surveyed for George Woods the 1<sup>st</sup> Day of Nov<sup>r</sup>. 1771 in Pursuance of an Order of Survey Bearing Date the thirteenth Day of Dec<sup>r</sup>. 1766 N<sup>o</sup> 2161.

John Armstrong

To John Lukens Esq. }  
 Surveyor General }

D.S.

IN TESTIMONY that the above is a copy of the original remaining on file in the Department of Internal Affairs of Pennsylvania, made conformably to an Act of Assembly approved the 16th day of February 1833, I have hereunto set my hand and caused the Seal of said Department to be affixed at Harrisburg, this twentysixth day of April 1907.

*Isaac B. Brown*  
 Secretary of Internal Affairs.